



**NX-SG2910**  
**Cloud Managed**  
**Security Gateway**  
**Switch Product Guide**

## User Manual Introduction

< <User Manual> > It mainly introduces the product introduction, hardware connection, usage method and suggestions for use of Nodexon-NX-SG2910 gateway.

Chapter 1: Product Overview. Product characteristics, hardware / software specifications and appearance.

Chapter 2: Hardware Connections. Refers to the connection between the gateway and other devices.

Chapter 3: Product Guide, guides the operation of the gateway.

Chapter 4: Product Packaging and Use recommendations.

## Obtaining Technical Assistance

Website:<https://www.nodexon.com/>

Technical Support Website:<https://nodexon.com/support>

Community:<http://www.nodexon.com/community>

Technical Support Email:[support@nodexon.com](mailto:support@nodexon.com)

Case Portal :<https://www.nodexon.com/caseportal>

Website:<https://www.nodexon.com/>

# Chapter 1: Product Overview

## 1.1 Brief introduction

NX-SG2910 is an Apollo-full Gigabit controller for switch applications such as chains hotel, star hotels, small and medium-sized businesses, etc., which is used for switch management of Hored's total solution. The NX-SG2910 provides five 10/100/1000Mbps adaptive Ethernet ports for up to 128 switches. The attached switch and the PD device can only implement the status check and management monitoring function by the Apollo smart transmission cloud management platform through the NX-SG2910 gateway, and can actively send out mobile phone and email alarms when abnormal, thereby achieving global unified maintenance and intelligent management.

## 1.2 Features

- Full Gigabyte Port

5 full Gigabit Ethernet ports, breaking through the traditional 100M limit, data transmission will not stuck.

- Qualcomm chip, more stable and powerful performance

Qualcomm high-performance chip, with 128M large memory, can greatly improve the network data processing rate

- Support for standardized protocols

Automatically identify and manage information of attached devices

● Cloud pass-through function

Implement the data transmission between cloud-gateway-switch-

Attached PD device.

● Supports up to 128 devices

Unique multi-capacity access technology ensures simultaneous access of 128 devices

1. 3 Hardware / software specifications

Hardware specification :

Chipset	Qualcomm high-performance chip
Flash	16M
RAM	128MBDDR
Network interface	· 4个10/100/1000MbpsRJ45port ( port 1~port 4 )
	· 1个10/100/1000MbpsRJ45port ( port5 ) , can be used as WAN
	Standard Protocol : ·IEEE802.3i、IEEE802.3u、IEEE802.3x
LED Indicator	· 1power indicator
	· 1system indicator
	· 5LINK/ACT indicator

Power supply	<ul style="list-style-type: none"> <li>Input : 100-240V50/60HZ</li> <li>Output : 12V- 1A</li> </ul>
	<ul style="list-style-type: none"> <li>Maximum power supply : 5.21W</li> </ul>
	<ul style="list-style-type: none"> <li>Resetbutton ( long press 5~10s to restore factory default configuration )</li> </ul>
Physical specification	<ul style="list-style-type: none"> <li>Dimension(LengthxWidth xHeight ) : 159*104.5*37*mm</li> </ul>
	<ul style="list-style-type: none"> <li>Weight : 0.6kg</li> </ul>
Environment al specification	<ul style="list-style-type: none"> <li>Operation temperature: 0°~40°C</li> </ul>
	<ul style="list-style-type: none"> <li>Storage temperature : -40°~70°C</li> </ul>
	<ul style="list-style-type: none"> <li>Operation humidity : 10%~90%, non-condensing</li> </ul>
Safety specification	<ul style="list-style-type: none"> <li>CE/ROHS/FCC/CCC</li> </ul>

Software specificaiton :

Transmissi on rate	<ul style="list-style-type: none"> <li>1000Mbpsfull duplex</li> </ul>
Performanc e specificatio n	<ul style="list-style-type: none"> <li>Backplane bandwidth : 10Gbps (Non-blocking )</li> </ul>
	<ul style="list-style-type: none"> <li>RAM : 128M</li> </ul>
	<ul style="list-style-type: none"> <li>Support system alarms, log statistics</li> </ul>
	<ul style="list-style-type: none"> <li>Support for up to 128 devices</li> </ul>
Protocol	<ul style="list-style-type: none"> <li>Support automatic discovery of cameras for detailed information</li> </ul>

function	<ul style="list-style-type: none"><li>• Support discovery and access to PC terminal information</li></ul>
	<ul style="list-style-type: none"><li>• Support SNMP protocol, discover and manage devices which support SNMP protocol</li></ul>
	<ul style="list-style-type: none"><li>• Cloud pass-through function. Realize data transmission of the connected device</li></ul>
Safety specification	<ul style="list-style-type: none"><li>· CE/ROHS/FCC/CCC</li></ul>

1.4 Appearance

 Front panel

Includes port indicator, system indicator, and power light, as shown below

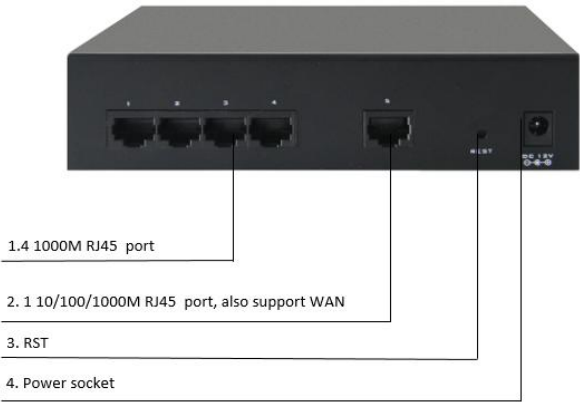


Indicator	Name	Status	Description
PWR	Power indicator	On	Device power supply normal
		Off	The adapter is not connected / the power adapter is powered abnormally.

SYS	System indicator	Blinking	Device connection is normal
		Off	The port is not connected / the connection is abnormal.
LINK/ACT	Device connection indication	Off	Corresponding port is not connected / the connection is abnormal.
		on	Corresponding device connection is normal

Rear panel

Includes RJ45 port, power port, reset hole, as shown below



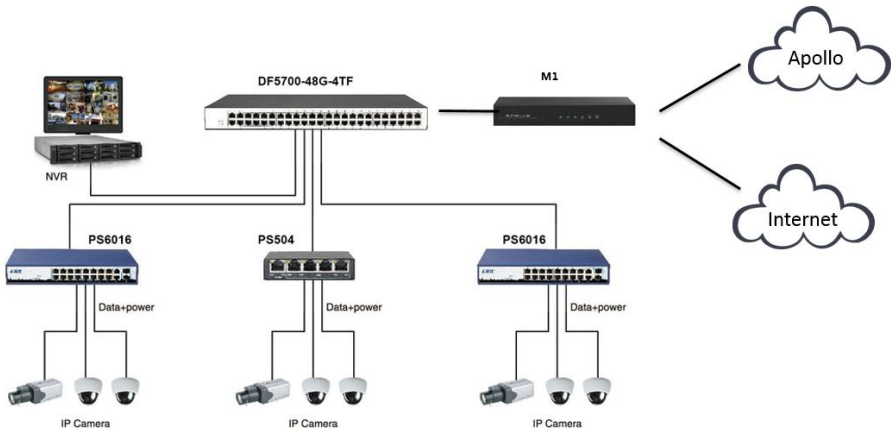
Port	Name	Description
------	------	-------------

RJ 45port 1-4	port1-4	Used to connect switches
RJ 45 port 5	port5	Used to connect switches, also can be used as WAN port
DC	DCpower supply	Connect the power adapter to power the gateway (supports 12V-1A, it is recommended to use its own adapter)



## Chapter 2 Hardware connection

Product connection diagram :



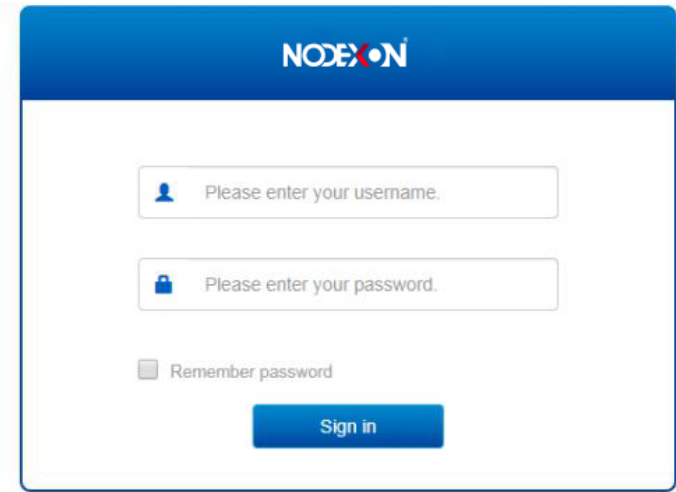
## Chapter 3 Product Guidelines

### ■ Login---Login on the Gateway Management Page

1. After connecting to the gateway, enter the address:

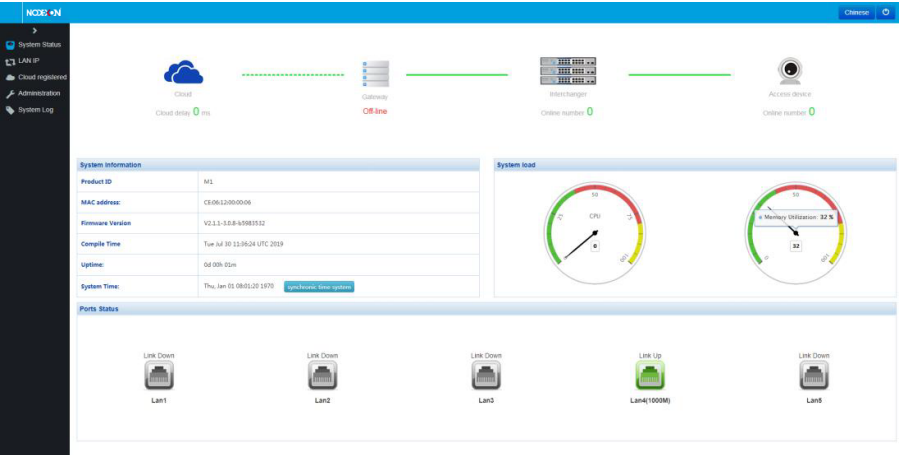
192.168.254.254 to enter the management interface:

2. Enter the account number: admin, password: admin, you can enter the gateway management interface



■ System Information---Overview of NX-SG2910

Gateway Version Information and Number of attached



## LAN port setting---automatically assign IP address

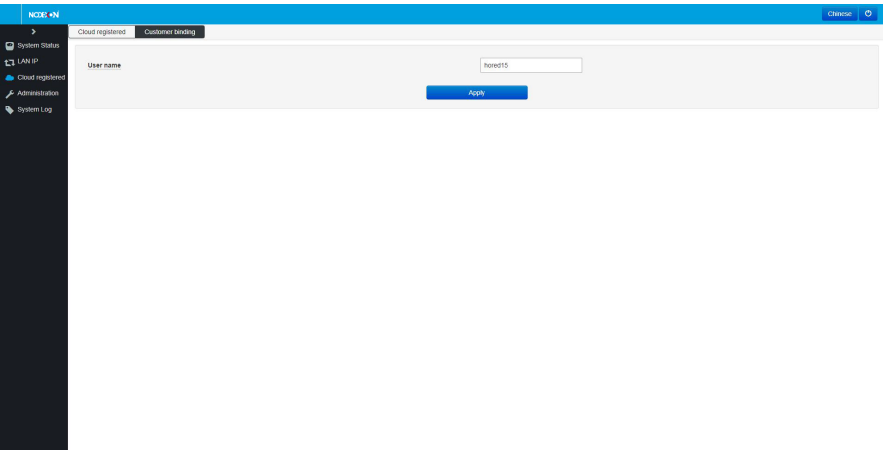
The screenshot shows the 'LAN IP' configuration page. A sidebar on the left contains links for 'System Status', 'LAN IP', 'Cloud registration', 'Administration', and 'System Log'. The main content area has a title bar 'LAN IP' and a 'Refresh' button. Below the title bar, a light blue box contains the text: 'To modify the IP address, you need to log in with the modified address.' Underneath, a section titled 'Get LAN IP Automatically?' contains a radio button that is currently selected. Below this are four input fields: 'IP Address' (containing '192.168.254.254'), 'Subnet Mask' (containing '255.255.255.0'), 'Default Gateway', and 'DNS Server'. An 'Apply' button is located at the bottom right of the form.

## Cloud registration --- Support cloud registration, user binding

a. Cloud registration: Connect to the Apollo platform for management and control devices through a registration code

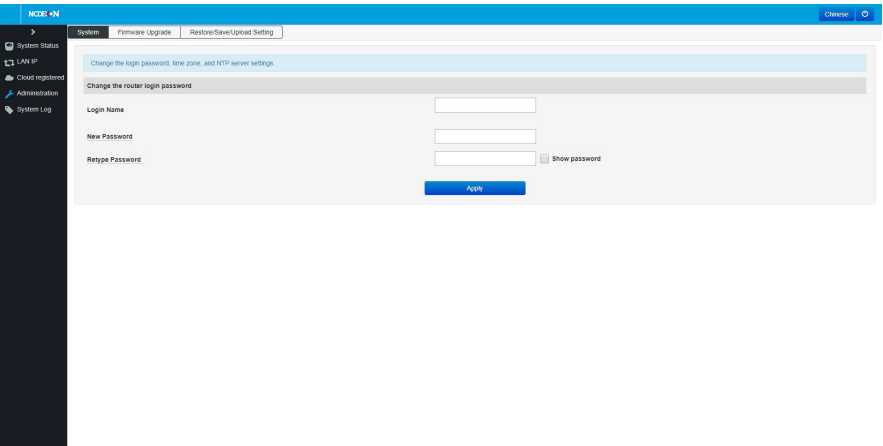
The screenshot shows the 'Cloud registration' page. The sidebar on the left is the same as in the previous screenshot. The main content area has a title bar with 'Cloud registration' and 'Customer binding' tabs, and a 'Refresh' button. Below the title bar, a light blue box contains the text: 'Cloud connect APOLLO for control device'. Underneath, a section titled 'WAN IP Setting' contains a 'WAN IP' input field with a 'Copy' button next to it. Below this are two input fields: 'Cloud Token' and 'Cloud Domain' (containing 'apollo.hored.net'). An 'Apply' button is located at the bottom right of the form.

b.User binding: support binding between the gateway and the user account

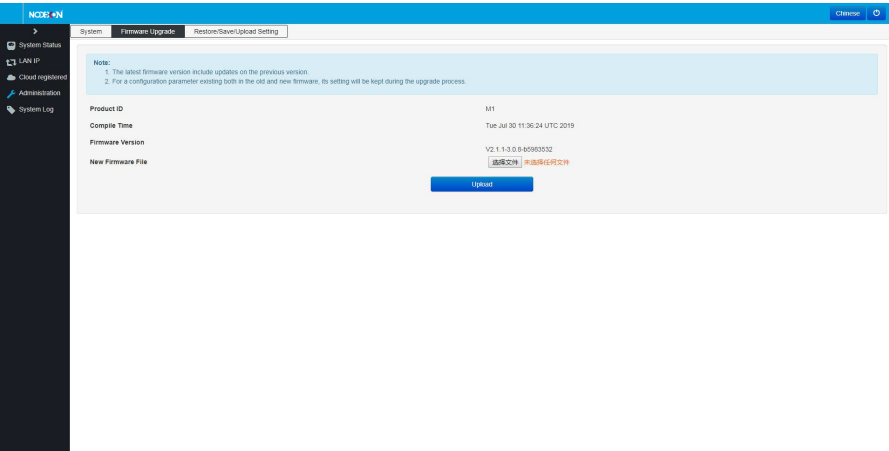


■ System Management---Support system settings, firmware upgrade, configuration file upload/import, reset

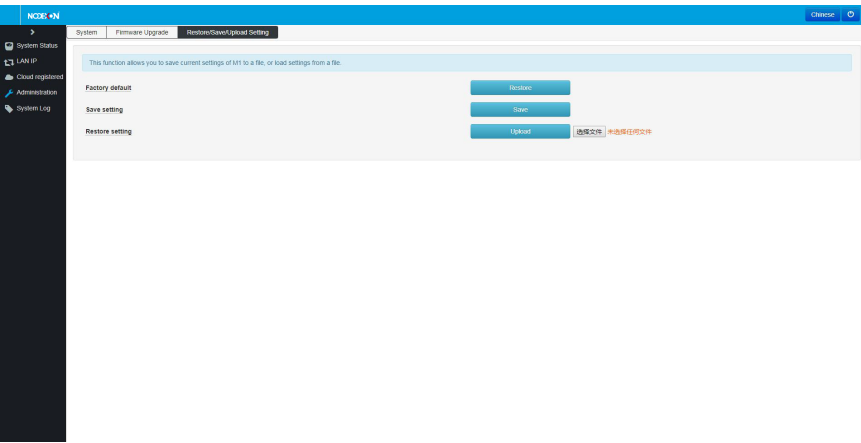
a. System Settings: Manage System Account Password



b.Firmware upgrade: support local firmware upgrade



c.Restore/Export/Upload Settings: Complete the configuration upload, export and restore default configuration





**Chapter 4. Packing list and usage recommendations 4.1 Open**

**the package and check the list below.**

Item	Quantity	Description
Gateway	one	\
Power cable	1	For power supply
Warranty Card	1	For after-sales maintenance
User manual	1	Used to guide users to install and use the gateway

**4.2 Suggestion**

1. For safety reasons, non-professionals should not open the product casing;
2. Pay attention to the danger of strong electricity and safe protection when the product is powered on;
3. Please select the correct power adapter to supply power to the gateway, and confirm whether it meets the requirements before use;
4. Do not use the gateway in a humid environment to prevent water from entering the fuselage through the casing, resulting in damage to the machine;
5. Please turn on the power after the line connection is completed;
6. When the product is powered on, please do not plug or unplug the cable except for special circumstances.
7. Do not use in places with excessive dust and electromagnetic radiation. Do not use the gateway in places with high temperature

and no ventilation;

8. Please do not place heavy objects on the gateway to avoid accidents;

9. It is recommended to use the gateway indoors. It is recommended to add a waterproof box when using it outdoors. Note: The pictures in the manual are for reference only, whichever is subject to the actual product.