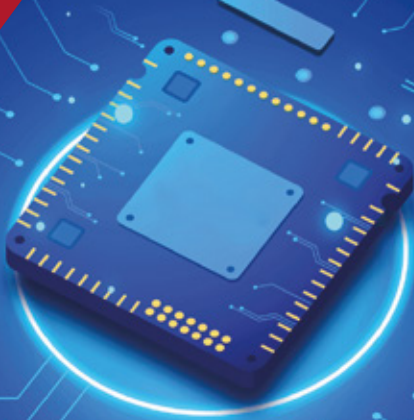


L3+ Managed Switch

NX-M2000-28GPM-S4G



OVERVIEW

NX-M2000-28GPM-S4 L3 managed switch with 4*10G Base-X+8*1000 Combo+16*10/100/1000 Base—T. Each RJ45 port supports MDI/MDIX auto flip and wire speed forwarding function. Using store-and-forward mode, combined with QoS technology, to ensure the effective allocation of bandwidth to each port provides security monitoring equipment such as high-power APs, network cameras, PTZ dome cameras, and PoE lighting.For stable and reliable power and data transmission.

FEATURES HIGHLIGHTS

- Number Of Interfaces 24
- Transmission Rate 10/100/1000mbps, 10/100mbps
- Fast Charge Agreement PoE, QoS, LACP, SNMP
- General 6000V Difference: 2000V Surge Protection Of Power



TECHNICAL SPECIFICATIONS

SPECIFICATIONS	NX-M2000-28GPM-S4G
Fixed port	4*10G Base-X+8*1000 Combo+16*10/100/1000 Base-T
Management Port	Support console
LED indicator	PWR, SYS, Link/ACT LED
Power in	220V/AC
Twisted-pair	0-100m (CAT5e,CAT6)
Mono mode optical fiber	20/40/60/80/100KM
Multi mode optical fibre	550m
Hybrid topology	Support

L3+ Managed Switch NX-M2000-28GPM-S4G



TECHNICAL SPECIFICATIONS

SPECIFICATIONS	NX-M2000-28GPM-S4G
Ring topology	support
Star topology	support
Bus topology	support
Tree Topology	support
Input voltage	AC 100-240V 50/60Hz
Total Power consumption	≤300 W
PoE port	1-24
PoE Protocol	IEEE 802.3af, 802.3at
Pin Assignment	1,2+;3,6-
PoE Management	Support
Switching capacity	128G
Packet forwarding rate	95.23Mpps
MAC address table	16 K
Buffer	12Mbit
Forwarding delay	<10us
MDX/MIDX	Support
VLAN	4K
Duplex Mode	Support
Flow Control	Support
Jumbo frame	Support 10K byte
DHCP Client & Server	Support
SNTP Client	Support
Port Statistics	Support



L3+ Managed Switch NX-M2000-28GPM-S4G



TECHNICAL SPECIFICATIONS

SPECIFICATIONS	NX-M2000-28GPM-S4G
Protected Port	Support
EEE	Support
Ethernet Ring Protection Switching	Support
LLDP	Support
LLDP 802.1 TLV	Support
MSTP / RSTP / STP	Support
STP BPDU Filter	Support
STP BPDU guard	Support
STP Port Fast	Support
IGMP Snooping	Support
MLD Snooping	Support
MVR	Support
IPv4 & IPv6 Management address	Support
Static Routes IPv4 & IPv6	Support
ARP	Support
Loopback Interface	Support
DHCP Server	Support
IPv4 Dynamic Routing	OSPF、RIP
DNS Client, DNS Server	Support
ACL	Support MAC standard/extended ACL, Support IPv4 Standard/Extended ACL, Support IPv6 Standard/Extended ACL
QOS	Support QOS remark, Support port trust, Support port speed limit, Support export queue speed limit, Support SP, WRR scheduling algorithm, Support COS mapping, DSCP mapping, IP priority mapping
User Management	Support



L3+ Managed Switch NX-M2000-28GPM-S4G



TECHNICAL SPECIFICATIONS

SPECIFICATIONS	NX-M2000-28GPM-S4G
System Log	Support
Upgrade Firmware	Support
Configuration File Download/Upload	Support
SNMP	Support SNMP V1/V2/V3
WEB Management	Support
Console	Support
CLI	Support
Telnet/SSH	Support
RMON	Support
Manage channel configuration	Support
AAA authenticate	Support
802.1X authenticate	Support
MAC-Based authenticate	Support
WEB-Based authenticate	Support
Dos Proof	Support
Dynamic ARP detection	Support
DHCP Snooping	Support
IP Source Guard	Support
Port Security & Protected Ports	Support
storm control	Support
Console Log	Support
RAM log	Support
Flash log	Support



L3+ Managed Switch NX-M2000-28GPM-S4G

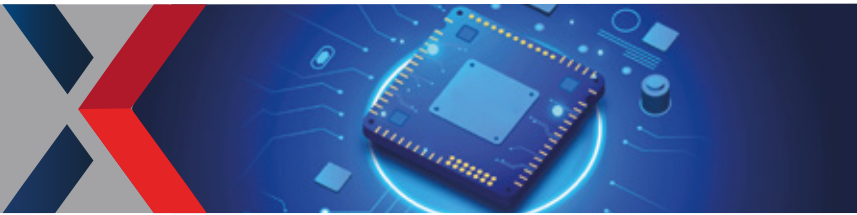


TECHNICAL SPECIFICATIONS

SPECIFICATIONS	NX-M2000-28GPM-S4G
Port Mirror	Support 1 : 1 or 1 : M
Ping	Support
Traceroute	Support
Electrical port test	Support SNMP V1/V2/V3
Optical module information	Support
UDLD protocol	Support
Operate Temperature	-10°C ~ 55°C
Storage Temperature	-40°C ~ 75°C
Relative humidity	Working Humidity : 10% ~90% RH Storage Humidity : 5% ~90% RH
Thermal methods	Fan
MTBF	100,000 hours
Product size	440*280*44mm
Installation Method	Rack-Mount
Weight	3.1KG
Surge protection of Power	IEC 61000-4-5 Level 4 (6KV/4KV)
Surge protection of Ethernet port	IEC 61000-4-5 Level 4 (6KV/4KV)
ESD	IEC 61000-4-2 Level 4 (8K/15K)
Free fall	0.5m
Accessories	Device, Terminals, Specification, Certificate ,Adapter(optional)
GVRP	Support
Protocol VLAN	Support
Voice VLAN	Support
Surveillance VLAN	Support



L3+ Managed Switch
NX-M2000-28GPM-S4G



TECHNICAL SPECIFICATIONS

SPECIFICATIONS	NX-M2000-28GPM-S4G
MAC VLAN	Support
Ether channel/ 802.3ad	Support
LACP	Support
Interface Speed	Support
DNS Client	Support

TECHNICAL DIAGRAM



USA

Tel +1 877 677 4040
info@nodexon.com
152 East 118th Street,
New York, NY 10035

EUROPE

Tel +44 746 6717286
uk@nodexon.com
Fairbourne Drive, Atterbury,
Buckinghamshire, UK

MIDDLE EAST

Tel +971 44 558570
mena@nodexon.com
Boulevard Plaza Tower One, Level 3,
Downtown Dubai, UAE

